

# Hardie™ Brushed Concrete Cladding

A designer look from the ground up



Sophisticated texture with a designer touch. This unique texture, which is embedded into the panel, is reminiscent of softly brushed concrete making it distinctively tactile. It's perfect for creating modern facades, appearing smooth from a distance and detailed up-close when used in ground floor applications.

Hardie™ Brushed  
Concrete Cladding

# Why choose Hardie™ Brushed Concrete Cladding?

Building with Hardie™ Brushed Concrete Cladding helps you create modern looks clients love, whilst helping to save time, cost and complexity; from reducing the trades required on site, to efficient carpenter friendly installation. The textured fibre cement panels are connected to each other with shiplap joints and supported by a range of Hardie™ Accessories, resulting in a streamlined installation process and a consistent, quality finish. The 8.5mm thick panels are compatible with a selection of Hardie™ 9mm accessories ensuring multiple Hardie™ cladding panels can be mixed and matched for diverse designs.

## Features & Benefits

- An embedded texture panel reminiscent of softly brushed concrete, which is presealed and ready to paint .
- Hardie™ Embedded Texture Technology enables beautiful, consistent textured panels without the need of artisan trades people.
- The panels are connected to each other with shiplap joints, cut to size and typically gun-nailed with minimal patching. There's no need for specialist trades to set joints and apply textures so that only carpentry trades are required for installation.
- The 8.5mm thick panels are compatible with a selection of Hardie™ 9mm accessories ensuring multiple Hardie™ cladding panels can be mixed and matched for diverse designs.
- The 1200mm wide panels are available in four lengths, enabling builders to select the most suitable size to help increase installation efficiency and help reduce wastage.
- Deemed non-combustible. It adheres to Bushfire Attack Level (BAL) requirements, up to BAL40.
- Fire Resistant. It can be used as part of a Hardie™ Smart Fire and Acoustic Wall System which achieves a fire resistance level (FRL) of up to 60 minutes.
- The panels resist warping, swelling, shrinking and damage from moisture.
- This can help to reduce the risk of paint cracking and deterioration, helping exterior walls to stay looking good for years to come.



Scan here to learn more about Hardie™ Brushed Concrete Cladding



Discover which Hardie™ fibre cement products are GreenRate™ certified and more at [jameshardie.com.au/sustainability-esg-initiatives](http://jameshardie.com.au/sustainability-esg-initiatives)

# Design possibilities

The fresh, flowing lines of Hardie™ Brushed Concrete Cladding are ideal for creating modern minimalist facades with interest. The texture transforms with light and proximity, creating a crisp, smooth appearance from a distance, but unexpectedly tactile on a closer look. Hardie™ Brushed Concrete Cladding has the versatility to use standalone, or pair it with other Hardie™ exterior cladding solutions to create a home your clients will love. It's suitable for ground floor and mixed-story applications, allowing you to make modern with confidence.



## Box Modern

A stand out Box Modern build that prioritises style and practicality.

Bennett St  
Building Designer and Builder: Futureflip

## Japandi

Hardie™ Brushed Concrete Cladding painted black in this striking project that cantilevers across the tree canopy.

Ford St, NSW  
Building Designer: Alex Urena Design Studio  
Builder: Innovation Building Group



## Modern Farmhouse

A Modern Farmhouse inspired by Scandinavian architecture and contemporary New Zealand Barn Houses.

Designer: Distinct Building Design  
Builder: Bakker Homes



# Product specifications

## Product specifications

Product Code	Description	Length	Width	Thickness
405310	Hardie™ Brushed Concrete Cladding	2440mm	1200mm	8.5mm
405311	Hardie™ Brushed Concrete Cladding	2750mm	1200mm	8.5mm
405312	Hardie™ Brushed Concrete Cladding	3000mm	1200mm	8.5mm
405309	Hardie™ Brushed Concrete Cladding	3600mm	1200mm	8.5mm

## Product accessories

### 1. Panel Layout

#### OPTION 1 Align with Centre

Best for symmetrical facades or strong geometries.

#### OPTION 2 Features

Best for asymmetrical facades with strong features.

#### OPTION 3 Run from Edge

Best for broadwalls.

### Design Led Accessories

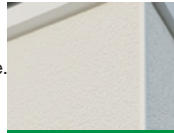
### Functional Accessories

### 2. External Corner

#### Hardie™ 9mm Aluminium External Slimline Corner

A sleek external corner with a sharp, minimal edge. It holds the panels tight with just 3.5mm of coverage.

Product Code: 306102



#### Hardie™ 9mm Aluminium External Square Corner

Aluminium extrusion that creates a square edge in external corners.

Product Code: 306100



### 3. Internal Corner

#### Hardie™ 9mm Aluminium Internal Concave Corner

A concave internal corner that gives 10mm of cover to conceal panel edges.

Product Code: 306103



#### Hardie™ 9mm Aluminium Internal Corner

A sleek squared internal corner for a strong clean line.

Product Code: 305520



### 4. Horizontal Jointer

#### Hardie™ 9mm Aluminium Recessed Horizontal Jointer

A recessed horizontal jointer that creates a 6mm horizontal shadow line.

Product Code: 306190

Connector Product Code: 306191



#### Hardie™ 9mm Aluminium Horizontal Express Jointer

A recessed horizontal jointer that creates a 6mm horizontal shadow line.

Product Code: 306104

Connector Product Code: 306110



### 5. Base Junction

#### Hardie™ 9mm Aluminium Base Slimline Starter

Aluminium base trim that creates a neat edge to the cladding whilst improving installation by supporting the bottom of the panel.

Product Code: 306192

Connector Product Code: 306193



#### Hardie™ 9mm Aluminium Base Trim

A elegant trim used to cover the slab edges or as a detail under balconies and cantilevers.

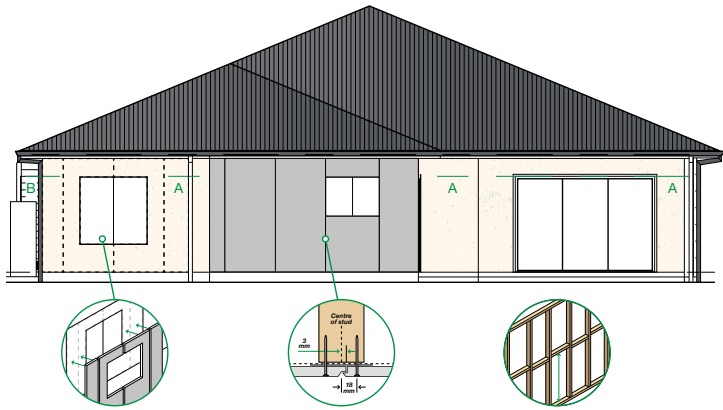
Product Code: 306105

Connector Product Code: 306111



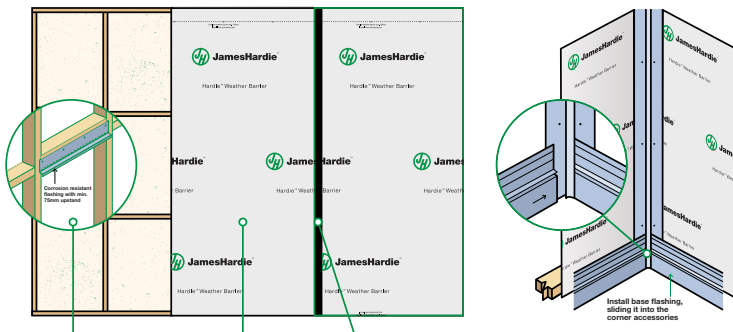
# Fast & easy installation

Before you start installing Hardie™ Brushed Concrete Cladding, read the Installation Guide on the James Hardie website, or use the QR code below. It covers all the required components, tools and accessories, design guidance, safe working practices, and warranty information.



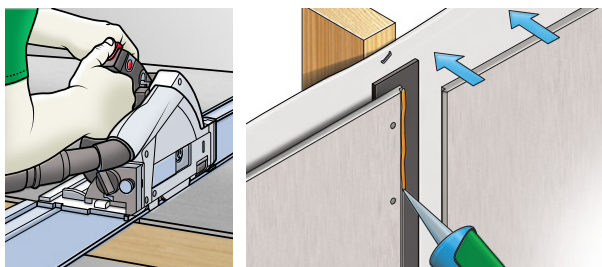
## 1. Plan the joint layout

- Choose a layout that's aesthetically pleasing.
- Make sure the edges of the panels are fully supported by a stud for secure nailing.
- Ensure the frame varies by no more than 4mm over 3 metres.



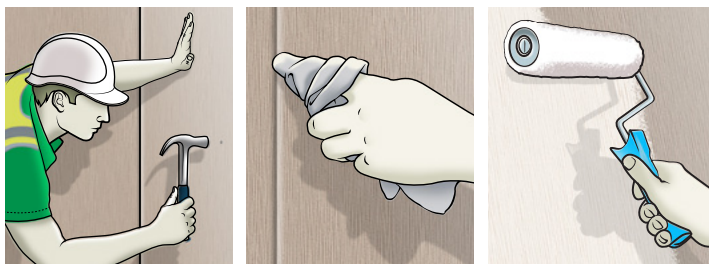
## 2. Prepare the frame

- Install the flashings above windows and other openings.
- Install Hardie™ Wrap Weather Barrier.
- Install Hardie™ Foam Back Sealing Tape at shiplap joint locations.
- Fix corners accessories then base trim.



## 3. Cut and fix the panels

- Use a plunge cut saw, Hardie™ Blade and M class or higher vacuum.
- Install the first panel using ND50 stainless steel brads at 125mm centres up to wind categories N3/C1.
- Put Hardie™ Joint Sealant on the shiplap edge and install the subsequent panels.



## 4. Clean-up and paint

- Hand finish any under driven nails and patch over driven nails using a suitable exterior grade filling compound.
- Clean up wet sealant from the shiplaps or patching with soapy water.
- The panels are sealed ready for a water based exterior paint.



For full Installation Guide, please see the Hardie™ Brushed Concrete Cladding page

\* Source: Hardie™ Fine Texture Cladding and Hardie™ Brushed Concrete Cladding Installation Guide.



**For information and advice**

**Call 13 11 03**

**Visit [jameshardie.com.au](https://www.jameshardie.com.au)**

**Follow us @jameshardieau**



© 2025 James Hardie Australia Pty Ltd ABN 12 084 635 558. <sup>TM</sup> and ® denote a trademark or registered trademark owned by James Hardie Technology Ltd.

AUSTRALIA AUGUST 2025

